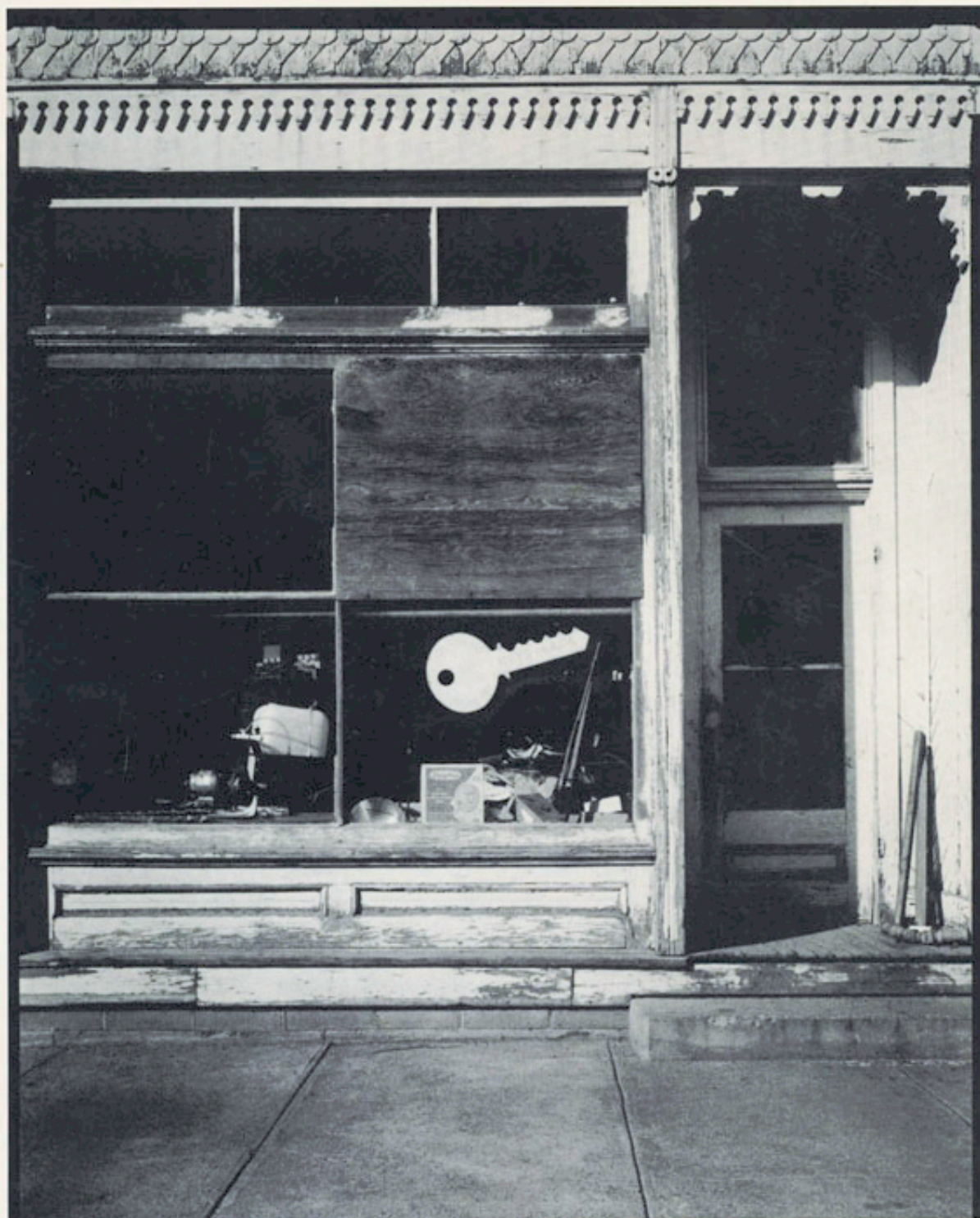


THE BRIAR CLIFF
REVIEW

Volume 2, Issue 1

Spring 1990

\$3.00



**THE BRIAR CLIFF
REVIEW**

Founded 1989

Volume 2, Issue 1 Spring 1990

Managing Editor
Tricia Currans-Sheehan

Poetry Editor
Jeanne Emmons

Fiction Editor
Norine Ryan

Non-Fiction
Mary Elsbernd, O.S.F.
Paul Weber

Siouxland Editor
Bill Hewitt

Photo Editor
Michael Crowley

Copy Editor
Phil Hey

Assistant Copy Editors
Tim A. Casady
Sharon Murphy
Rob Treinen

Editorial Consultant
Clo Weirich, O.S.F.

Layout/Design Editors
Loretta Bauer, O.S.F.
Pam Schroder

Publisher
Briar Cliff College

Editorial &
Business Offices:

Briar Cliff College
3303 Rebecca
Sioux City, IA. 51104

Rates: \$3.00

FICTION

-
- 14 The Conceited Ghost, *by Tom Welch*
 - 18 Interview with Grendel, *by Marguerite Bandza*
 - 22 Ban this Story, *by Tim A. Casady*
 - 37 Of Rats and Kids, *by Cynthia Schmidt*
 - 48 Rubber Hooves, *by Cynthia Schmidt*
 - 54 Hattie, *by James B. Tate*

POETRY

-
- 5 Unknown Neighbor, *by Camillus Mescher, O.S.F.*
 - 21 Roy, *by James B. Tate*
 - 36 Animus Unbound, *by Theo Ingram*
 - 36 Palimpsest Restored, *by Theo Ingram*
 - 41 The Goldfinch, *by G. J. Frahm*
 - 41 They Also Serve, *by G. J. Frahm*
 - 47 Now That I'm Too Old, *by Jim Redmond*
 - 49 The Willow Tree, *by Matthew Mauch*
 - 52 Darkness Falls, *by Sara Danielson*
 - 53 February, *by Charlene Nelson*
 - 53 Hang Gliding, *by Charlene Nelson*
 - 57 Interview, *by Tim A. Casady*
 - 59 Unmet, *by Melissa Woods*
 - 60 From Solitary Isolation, *by Clo Weirich, O.S.F.*
 - 60 In Search of Love, *by Clo Weirich, O.S.F.*
 - 77 Nightmare's Pinnacle, *by Brett D. Brodersen*
 - 78 Summer Nights, *by Lisa Pflueger*

SIOUXLAND

-
- 27 'Neath Sioux City Skies, *by Richard L. Poole*
 - 31 End of a Democratic Oasis, *by Greg R. Salmon*
 - 69 It's the Flu, *by Cammy Jo Brandt*
 - 74 Quilting, *by Emily Ryan*

NON-FICTION

ARTICLES

- 6 The Element of Play, *by Paul Weber*
- 16 My Adopted Tree, *by Jordan Welu*
- 38 Life in the Ocean, *by Bob Olson*
- 61 Soviet Leadership, *by Edith Gottsacker, O.S.F.*

THE REFLECTIVE I

- 23 Going Home, *by Marcia Pauling*
- 45 Our Secret, *by Barbara Wiley*
- 46 Washed Away, *by Greg Slominski*
- 50 Turning Eight, *by Kenneth Welch*
- 58 The Lost Generation, *by Renato Rosales*

THE BRIAR CLIFF
REVIEW

COMIC RELIEF

- 24 Us vs Them, *by Tim A. Casady*
- 25 Telephone Consumer, *by JoAnne Mann*
- 44 Letter to Michael, *by Janet Jelken*

BOOK REVIEWS

- 79 Hoff's The Tao of Pooh, *by Mary Berberich*
- 80 Doig's Dancing ... Rascal Fair, *by Teresa Boucher*

PHOTOGRAPHY

- Cover Photo, Hardware Store, Hornick, Iowa, *by Douglas L. Burg*
- 12 Counterpoint, *by Richard Steinbach*
- 13 Lucien Johnson, near Elk Point, South Dakota, *by Douglas L. Burg*
- 20 The Artist, *by Michael Crowley*
- 22 A Native of Folsom, *by Michael Crowley*
- 26 A Turn to the Right, *by Michael Crowley*
- 30 Granary, Sloan, Iowa, *by Douglas L. Burg*
- 35 Sublette Ruins, near Kemmer, Wyoming, *by Douglas L. Burg*
- 39 Not Responsible for Accidents, *by Sherry Leesley*
- 40 Arvid Olson, *by Douglas L. Burg*
- 42 The Home Place, *by Pam Schroder*
- 44 Door, Snow, Sioux City, Iowa, *by Douglas L. Burg*
- 48 Painted Wall, Odel, Nebraska, *by Douglas L. Burg*
- 51 Dog and Girl, *by Sherry Leesley*
- 68 Reflecting Pond, *by Michael Crowley*
- 73 Man on Bench, *by Michael Crowley*
- 76 At the Water's Edge, *by Richard Steinbach*
- 81 Industrial Toilet, *by Douglas L. Burg*
- 82 Exit, *by Sharon Murphy*

ART

- 31 Lincoln and Douglas Debate, *by Kim Grieve*
- 49 Untitled, *by Kim Grieve*
- 74 Drawings of Quilt Patterns, *by Kim Grieve*

GUIDELINES FOR
CONTRIBUTORS

We want quality poetry, fiction, humor/satire, Siouland history, essays on academic topics, thoughtful nonfiction, book reviews and art: line drawings, cartoons, photos (clear b & w), woodcuts, computer graphics and/or art work.

Unsolicited manuscripts will not be returned unless accompanied by self-addressed envelope with sufficient postage affixed.

THE BRIAR CLIFF REVIEW is an official publication of Briar Cliff College. © Copyright 1990 by Briar Cliff College, 3303 Rebecca Street, P.O. Box 2100, Sioux City, Iowa 51104-2100. Telephone: (712) 279-5321. Opinions expressed in THE BRIAR CLIFF REVIEW are those of the individual authors and do not necessarily reflect the views of the editors or Briar Cliff College.

Briar Cliff College proudly continues its historic policy of non-discrimination against student applicants, students enrolled, or in its employment practices on the basis of sex, race, color, national ethnic origins or physical handicaps.

POSTMASTER: Send address changes to THE BRIAR CLIFF REVIEW, Briar Cliff College, 3303 Rebecca Street, P.O. Box 2100, Sioux City, Iowa 51104-2100.